

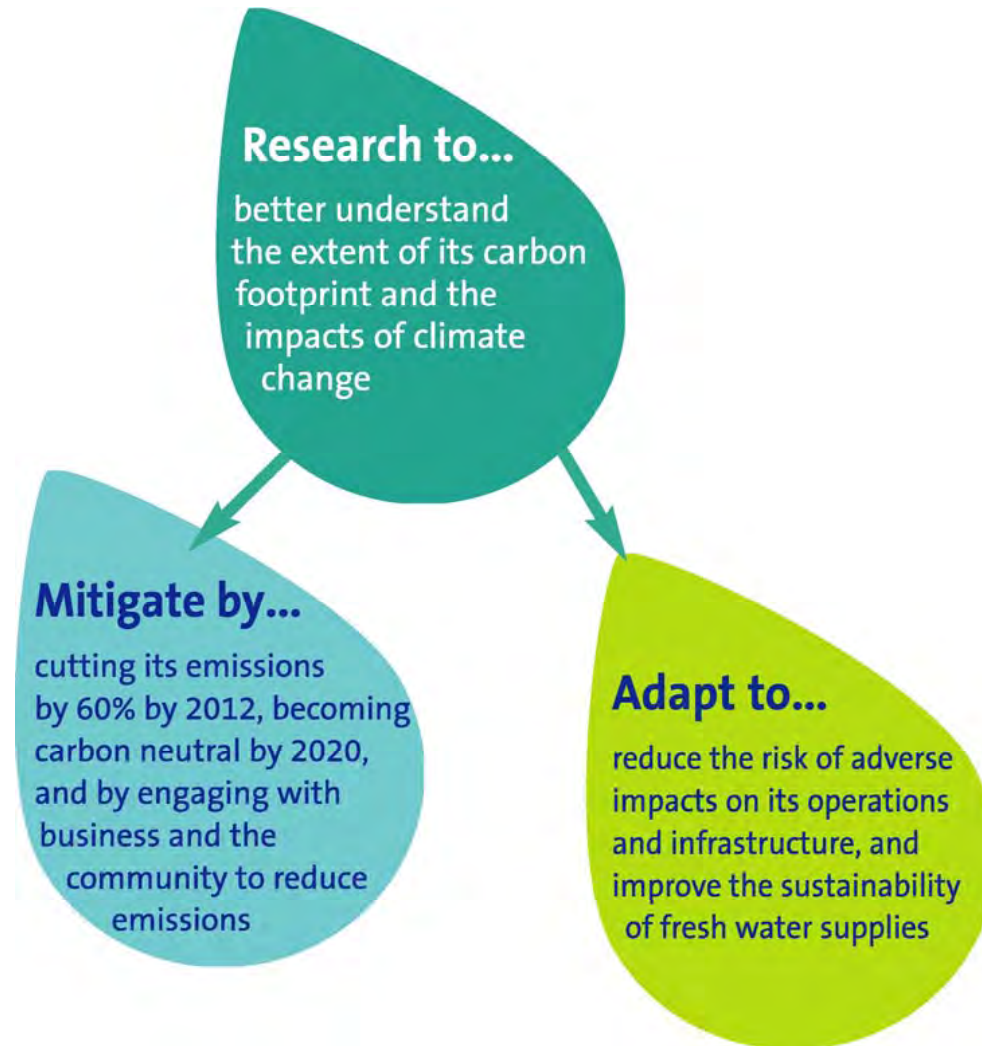
Approaching EEO as part of an integrated response to Climate Change

- Daniel Cooper
- Sydney Water
- 13 May 2009

Sydney Water

- Water services
 - 1.4 billion litres/day delivered
 - 148 pumping stations
 - 21,000 km pipelines
- Wastewater services
 - 1.2 billion litres treated/day
 - 36 million litres recycled/day
 - 30 Wastewater treatment plants
 - Over 650 Sewage pumping stations
- Stormwater services
 - 474,000 properties

Climate Change Strategy



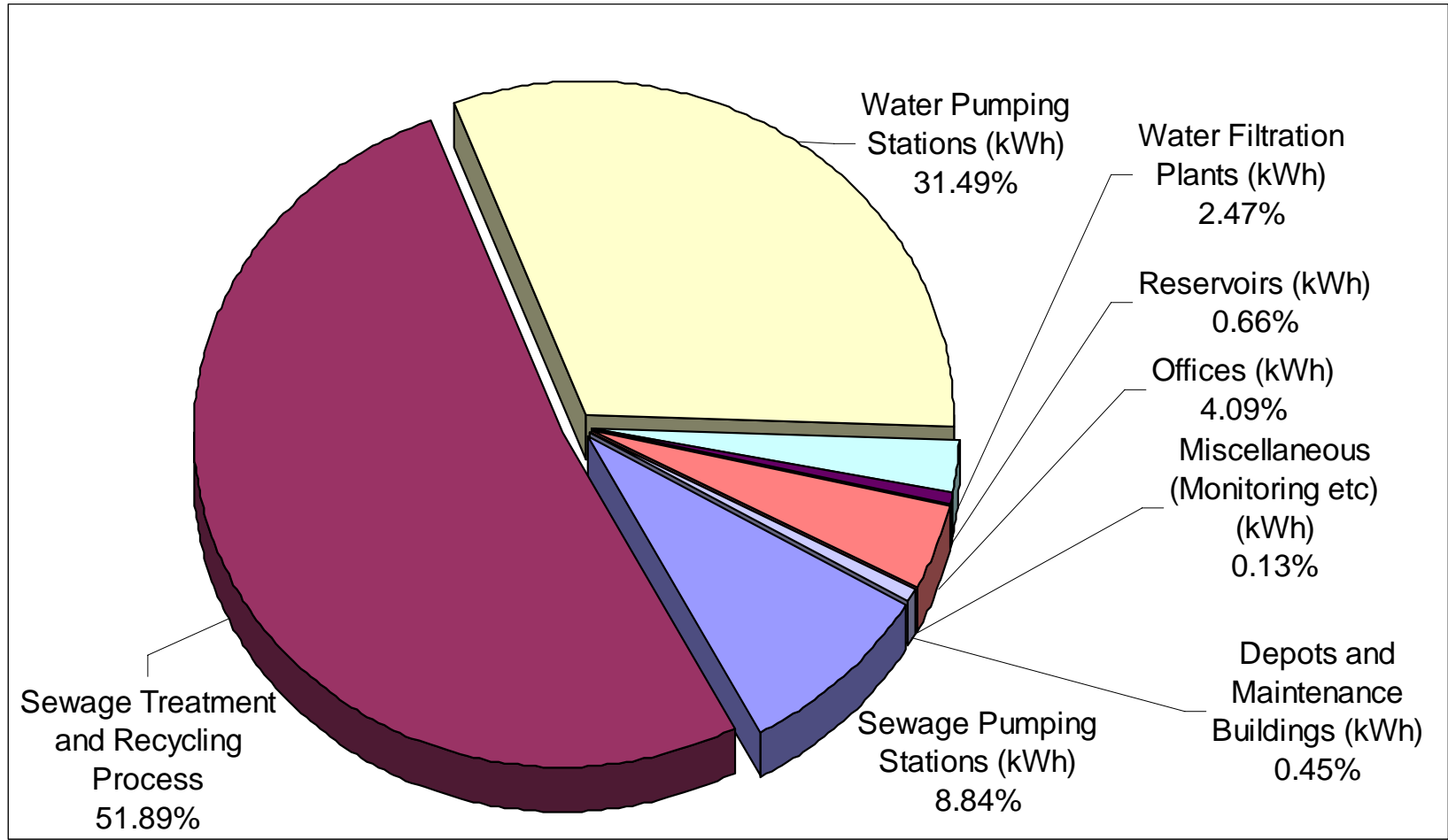
Key Energy / Greenhouse Information

- Carbon Neutral for operational energy use by 2020
- Generate about 20% of its energy use by Mid 2010
- 100% Wind generation to power the Desalination Plant

- Energy Efficiency Opportunities (June 08)
 - Assessments covering 40% of total energy use
 - Four wastewater treatment plants
 - Three water pumping stations
 - Two wastewater pumping stations
 - 104 Opportunities

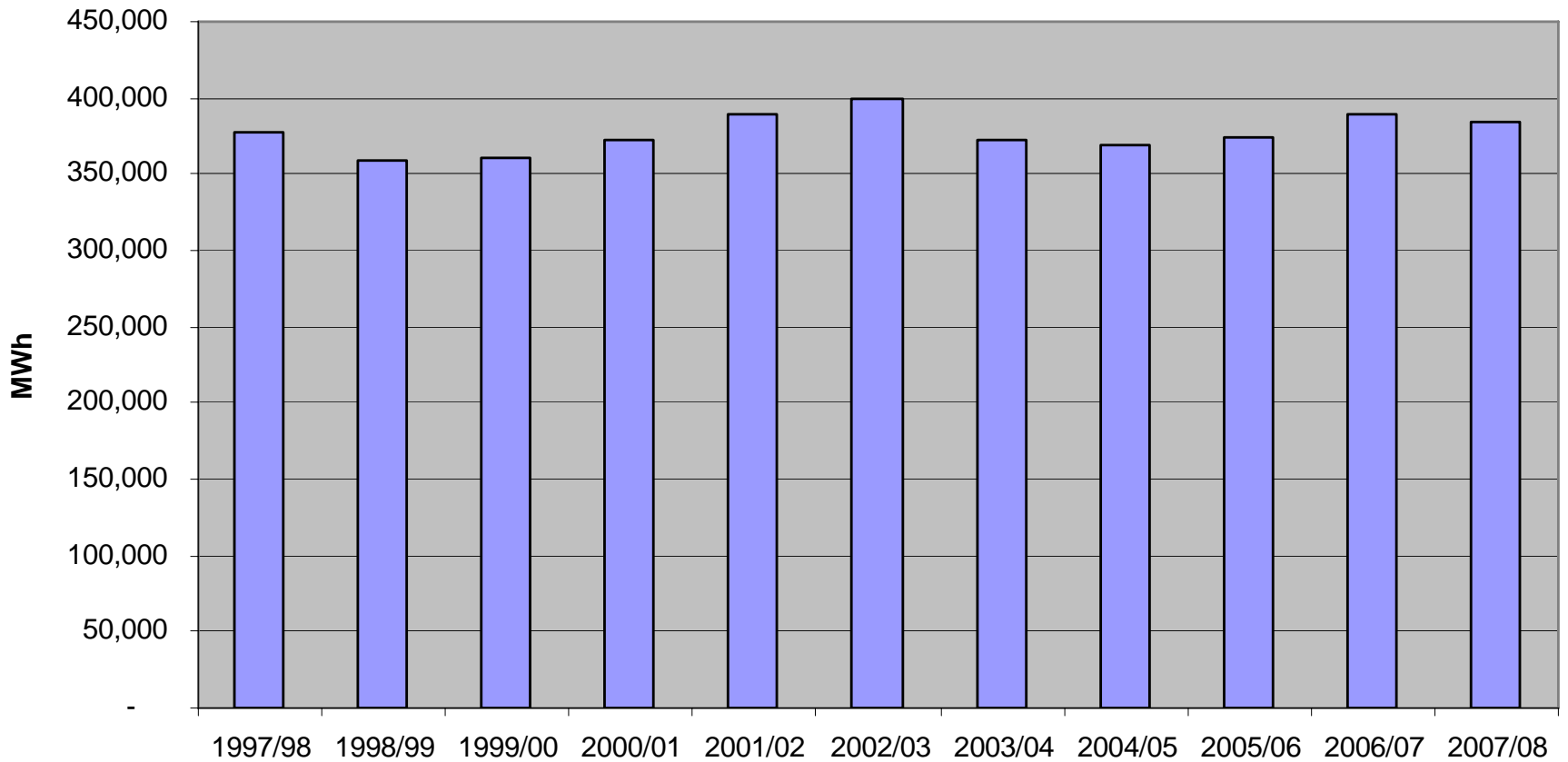
Energy Use - Overview

Energy Use by Assets 07-08



Energy Consumption

Total Electricity Consumption



Energy Management

- Organisation wide approach
- Long term strategy
- Energy Management Plan
- Energy Management Unit
 - Energy Partners
 - WorleyParsons
 - Energetics
- Continuous Management
 - Reliable data and reporting
 - Communications
- Specific Project and Implementation
- Ongoing planning

Sydney
WATER
energetics[®]



WorleyParsons
resources & energy

Energy Management Information System - Compliance / Opportunities

