

NATIONAL FRAMEWORK FOR ENERGY EFFICIENCY

Stage II

CONSULTATION PAPER

AIRAH/AMCA RESPONSE

SEPTEMBER 2007

PART 1. HVAC HIGH EFFICIENCY SYSTEMS STRATEGY

- **INTRODUCTION**

- AIRAH and AMCA
- Both National Industry organisations
- Both organisations together provide extensive industry representative coverage

PART 1. HVAC HIGH EFFICIENCY SYSTEMS STRATEGY

- **INTRODUCTION**

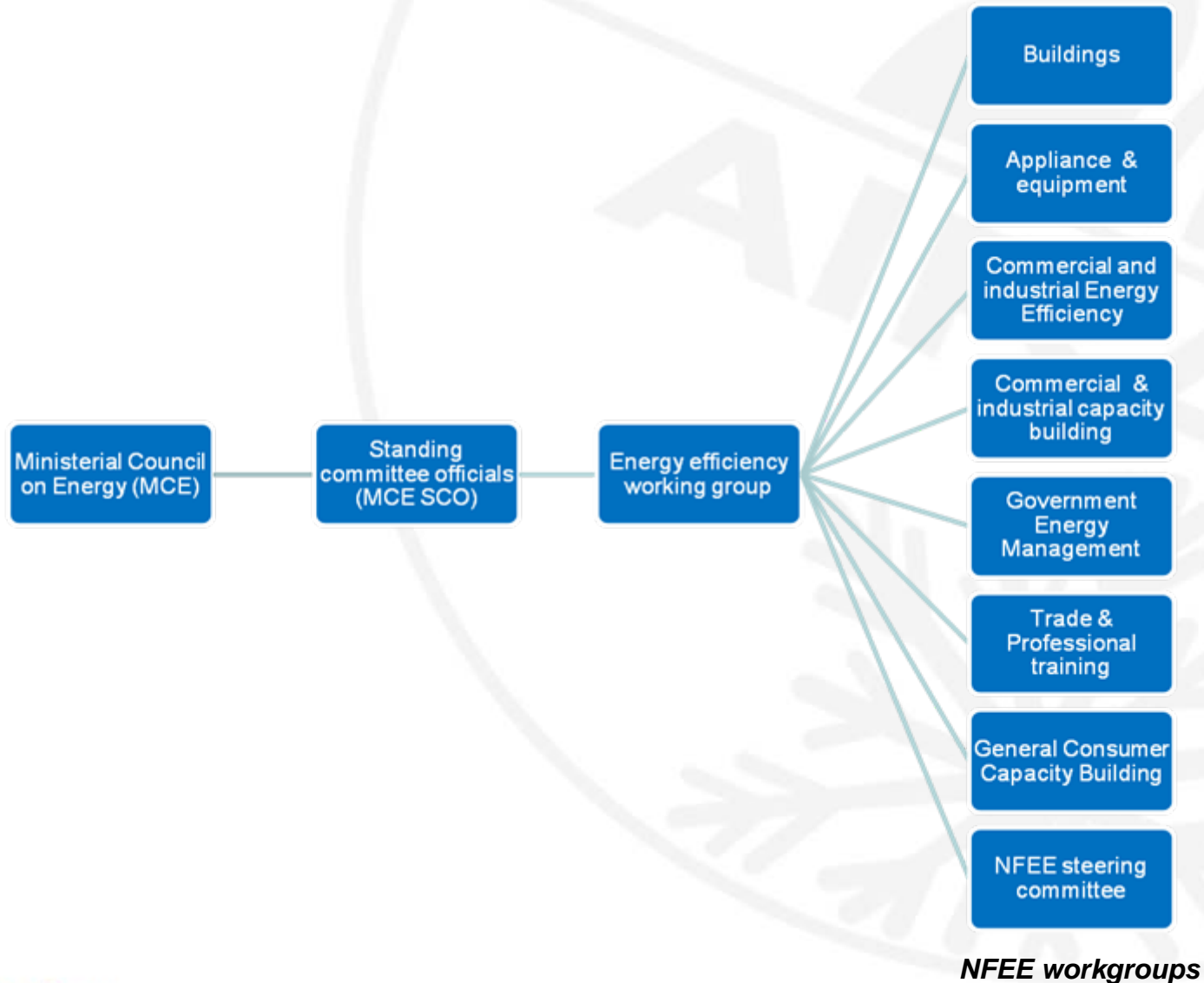
- AIRAH and AMCA have both worked to assist with the development of the industry profile information and indeed the actual HVAC strategy itself
- AIRAH and AMCA are Registered Training Organisations
- AIRAH and AMCA are both participating in the development of NFEE funded training products with NFEE (Sustainability Victoria)

PART 1. HVAC HIGH EFFICIENCY SYSTEMS STRATEGY

- **MAIN POINTS**

- There is an industry consensus on the size and profile our HVAC&R industry in terms of \$value size, energy consumption and the potential for energy savings. This information has been documented in the HVAC High Efficiency Systems Strategy report
- Our HVAC&R Industry has expressed uniform support and commitment to the proposed strategy and its implementation.
- Of concern to AIRAH and AMCA, is the how the strategy will be implemented by NFEE
- The NFEE structure is very diverse and utilises a wide range of state bodies for the implementation of NFEE Programs

NFEE Structure



PART 1. HVAC HIGH EFFICIENCY SYSTEMS STRATEGY

- **MAIN POINTS**

- We feel that the project should have a nationally coordinated approach for its implementation to avoid regional impediments.
- The industry feels that anything else but a coordinated national approach may dilute and fragment the implementation program.
- Without this approach we see the effectiveness of the program and the measurable outcomes as potentially being reduced and involving a more time consuming exercise.

PART 1. HVAC HIGH EFFICIENCY SYSTEMS STRATEGY

- **MAIN POINTS**

- The industry would like to see a representative Industry Steering Committee established and involved in the implementation program.
- We also see the MEPS Scheme as having relevance to the Commercial and Industrial Building Environment.
- This approach should not replace the need for improved systems but should represent a component of the improved final HVAC solutions.

Part 2. DEVELOPMENT OF DIAGNOSTIC TOOLS FOR MEASURING ENERGY PERFORMANCE OF NON RESIDENTIAL BUILDINGS

- The existing commercial building rating tools have achieved a great deal in creating the awareness of and actions that can be taken to improve energy consumption in commercial buildings.
- However the HVAC&R Industry has a number of concerns.
 - 1 - That the two schemes do not as yet correlate in linking designs to outcomes.
 - 2 - That there is not an in-depth review mechanism for ratings given over time. There is no built in process to ascertain the actual design achievements in energy savings or the maintenance of standards over time.
 - 3 - That neither scheme actually has sufficient weighting in their tools to reflect the key areas of energy/water consumption in commercial buildings .

Part 2. DEVELOPMENT OF DIAGNOSTIC TOOLS FOR MEASURING ENERGY PERFORMANCE OF NON RESIDENTIAL BUILDINGS

- The HVAC component represents between 50-60% of the overall energy consumed in commercial buildings.
- Current rating schemes do not sufficiently reflect the performance of this critical energy use area.

CONCLUSION

- AIRAH is in the process of developing a diagnostic tool that we expect will be able to fit in and complement the NABERS ENERGY (ABGR) rating tool regarding the HVAC component of energy consumption in the commercial built environment